



# LONG BEACH

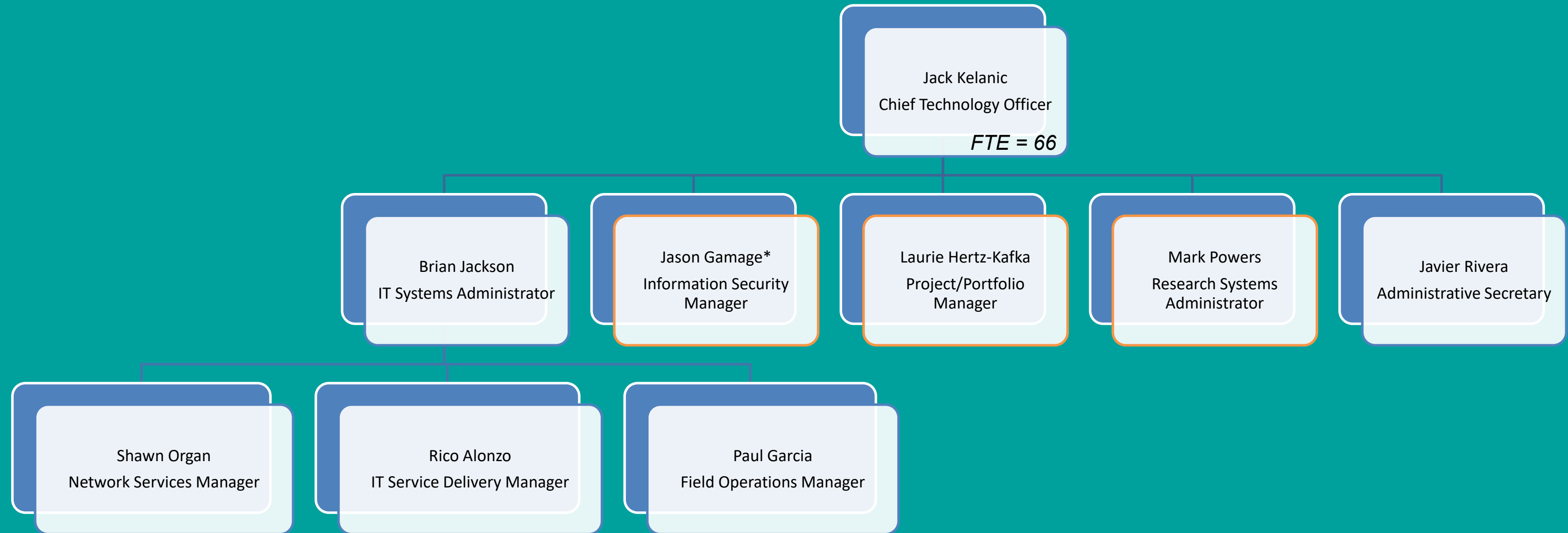
## UNIFIED • SCHOOL • DISTRICT

Technology & Information Services Updates  
Board Workshop  
July 17, 2024

# Agenda

- ◆ **Technology Services Overview**
- ◆ **Strategic Focus Areas for School Year 24-25**
- ◆ **Business Systems Modernization Program Update**
  - Question & Answer
- ◆ **Cybersecurity Program Update**
- ◆ **Artificial Intelligence Update**
  - Question & Answer

# Technology Services Organization



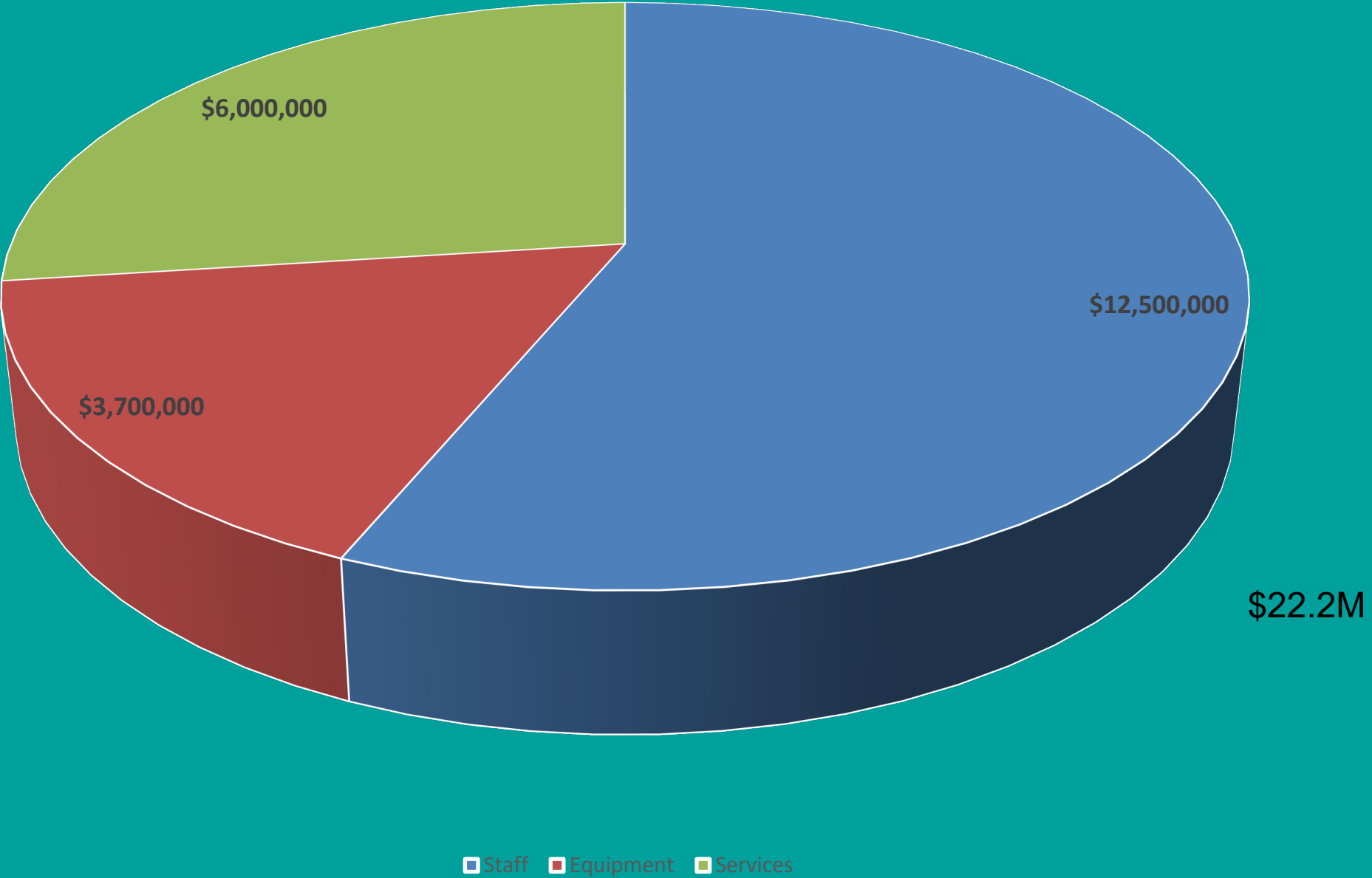
\*Contractor

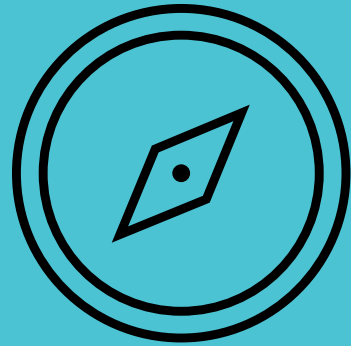
# Technology Service Portfolio

Services	Description	Value Statement
<b>IT Infrastructure</b>	Networking equipment, servers, switches, uninterruptable power supplies, and end-computing devices for schools and business operations.	Resilient education services
<b>Telecommunication</b>	Wi-Fi networking for entire campus, voice services, and 1-10 Gbps Internet service to each campus and office	Business communications
<b>Messaging &amp; Collaboration</b>	Email services, instant messaging, calendaring, video conferencing, cloud-based file storage, secure remote access tools	Employee collaboration
<b>Emergency Communications</b>	Emergency communication UHF radios used by School Safety, Operations, and school Principals	School safety
<b>Hosting &amp; System Administration</b>	Data center hosting, computing, data storage, and backup/restore capabilities for the District's information and systems	Efficient resource utilization Business continuity
<b>Business Systems</b>	Business automation and transaction processing required to execute the District's major business functions (HR/Payroll, Budget/Finance, Procurement)	Efficient resource utilization & compliance
<b>Research Systems (New)</b>	Development, support and data integration for LROIX longitudinal student data warehouse and related web applications, including Parent LROIX & School of Choice.	Student accountability & Parent engagement
<b>Cybersecurity Services (New)</b>	Establishes and monitors appropriate information systems controls to protect against loss of data, disruption of services, and other misuse of District resources.	Compliance Resiliency of education services
<b>Customer Support Services</b>	Campus-based technicians for technology deployments, installation, troubleshooting, repairs, upgrades, user access, and related customer requests. Live help desk support via voice, email, or chat. Synchronous remote support.	Maximize teaching and learning opportunities

# Technology Services Budget

2024-25 IT Operating Budget





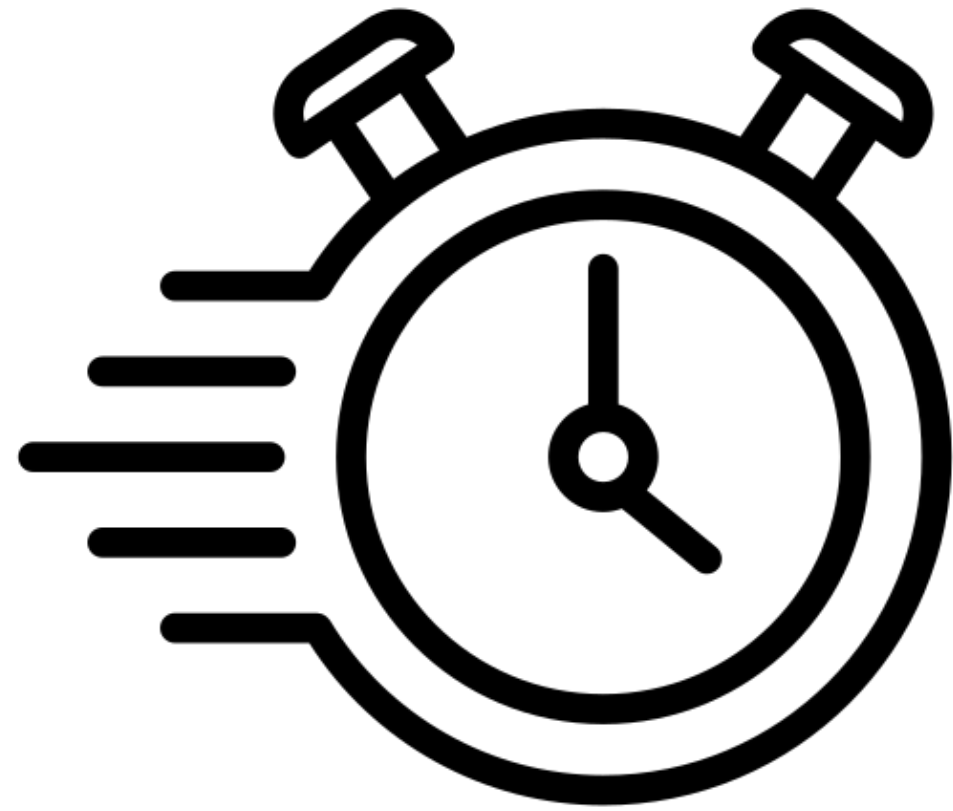
# IT Strategic Focus

The CTO 100-day onboarding process included interviews with dozens of stakeholders across all LBUSD departments, school visits, service ride-along, third-party assessments, and documentation review.

As a result of this engagement, four areas of near-term strategic focus were identified to address emergent needs of the District and to begin aligning with Vision 2035, specifically:

- Graduate Portrait
- Adult Portrait
- System Portrait

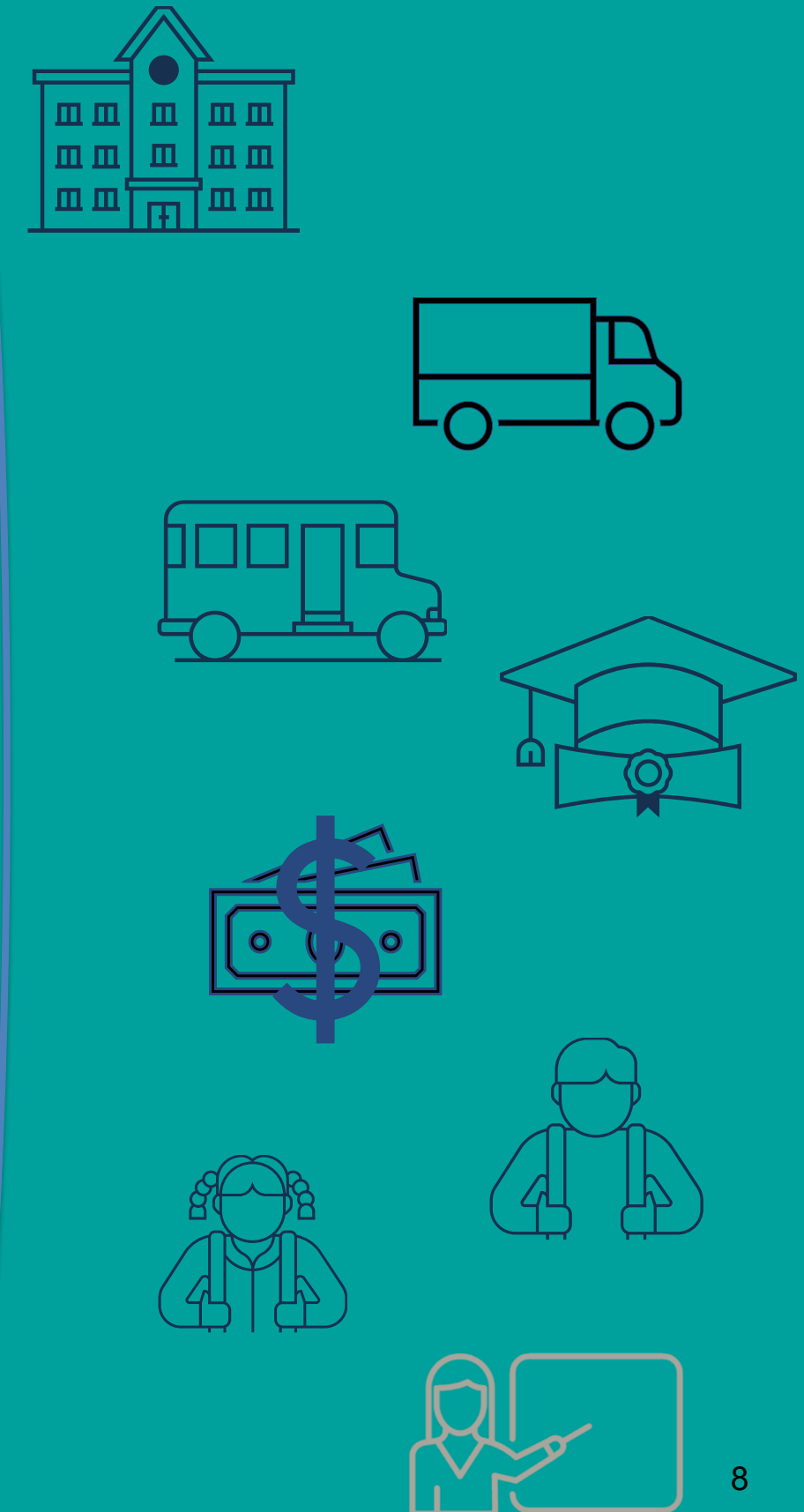
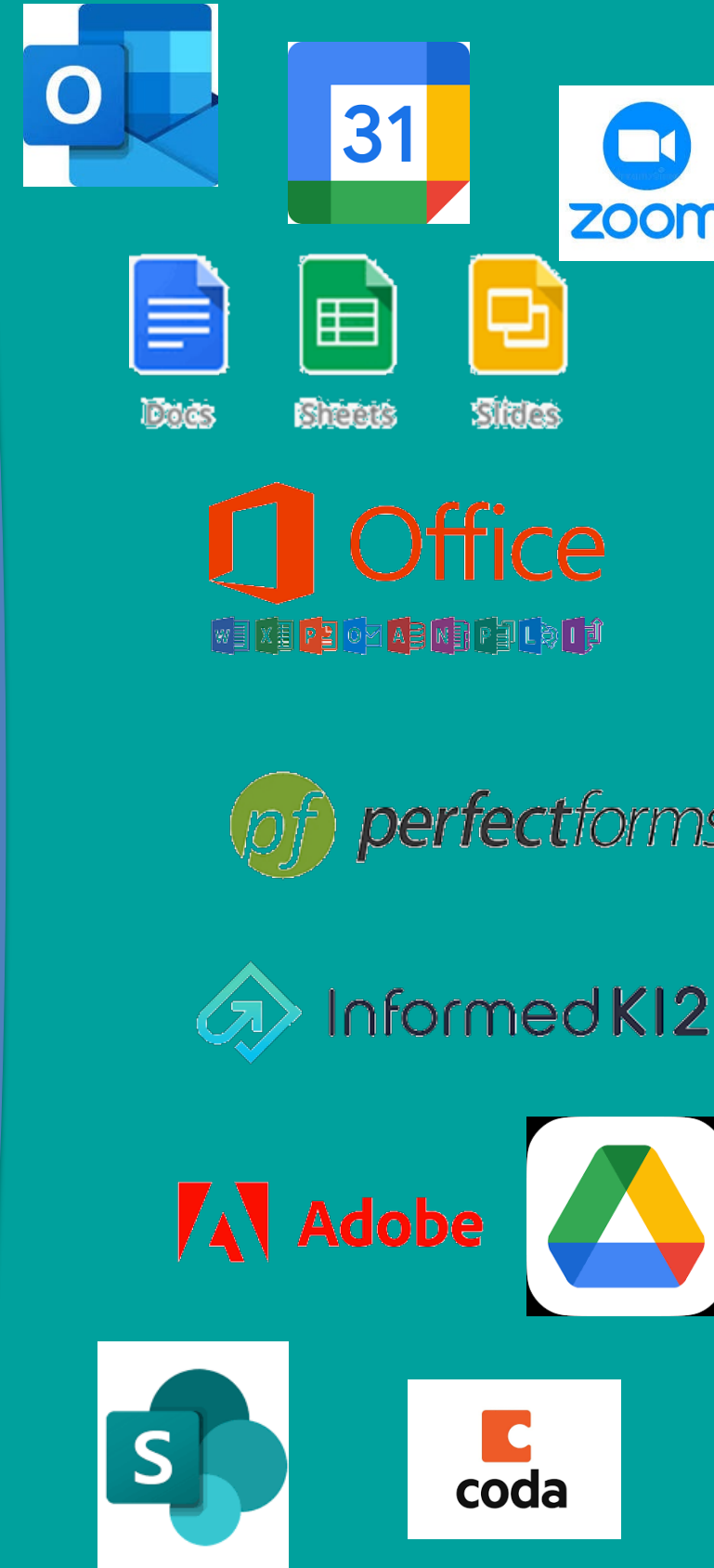
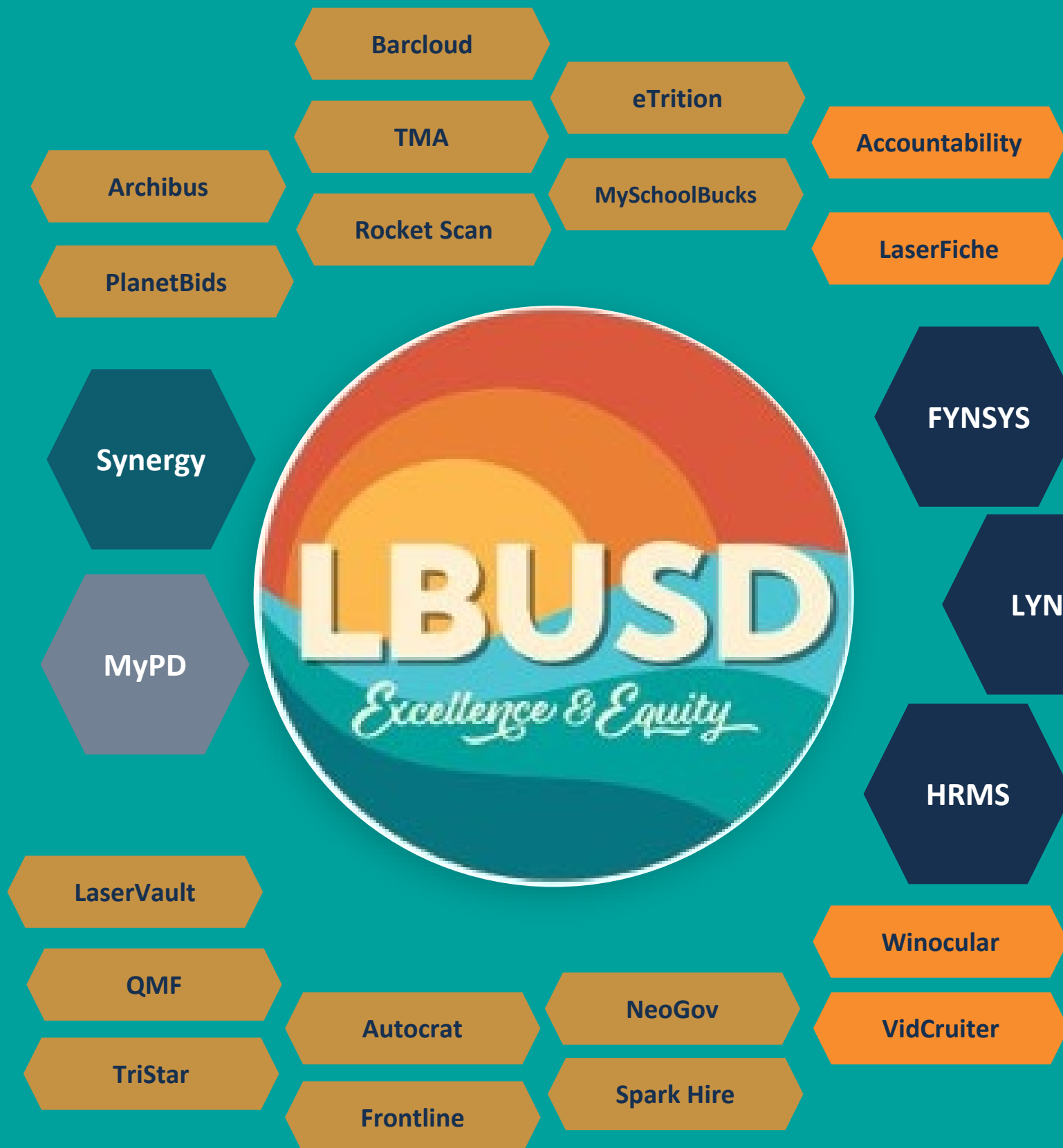




# **Business Systems Modernization Program Update**

# Business Systems Overview

## Current-State Architecture





# Business Systems Overview

## Case for Change

- Antiquated systems
- Limited or no commercial support
- Business process complexity
- Manual work processes
- Duplicative data entry
- Limited data-driven decision making
- Speed
- Customer experience
- Business continuity risk

```
Long Beach Unified School District
Main Menu

Please enter menu selection: _

01  Inquiries           (PGMM1)
02  VA Processing      (PFE)
03  Position Control   (BLA)
04  Personnel          (PEM)
05  Risk Management    (PRM)
06  Accounting         (PAM)
07  Payroll            (PFM)
08  Remote Time Entry  (PFK)
09  Dictionary         (DTM)
10  Security           (DCM)
11  Logoff

Your last signon was at 16:34:01 on 04/25/2024.

Command for Help
ands: E G X

Command
R 6 C 55
```

# Business Systems Overview

## Future-State Vision

### “RPM” STANDS FOR

Resource

Planning

Modernization

### PROJECT OBJECTIVE

Modernize LBUSD’s core business systems and processes by leveraging a fully-integrated commercial digital business suite

## Major Business Processes Included



### Budget/Finance

- Budget
- Accounting
- Capital Planning
- Asset Management
- Work Order Management
- Financial Reporting



### HR/Payroll

- Recruitment
- Onboarding
- Transfers
- Payroll
- Benefits
- Travel & Expense
- Retirement



### Supply Chain

- Sourcing
- Purchasing
- Contracts
- Receiving
- Warehouse
- Distribution
- Accounts Payable

# Project Governance

## Executive Sponsors

**Kelly An**, Assistant Superintendent, Human Resources

**Yumi Takahashi**, Chief Business and Financial Officer

## Steering Committee

### Human Resources

Kelly An  
Kim Dalton

### Fiscal Services

Renee Arkus  
Shawn Bartschi

### Personnel

**Commission**  
Susan Leaming

### Technology

Brian Jackson  
Jack Kelanic

### Warehouse

Steve Bui  
Juan Rivera

### Procurement

John Tamura

### Nutrition Services

Lieling Hwang

### Facilities

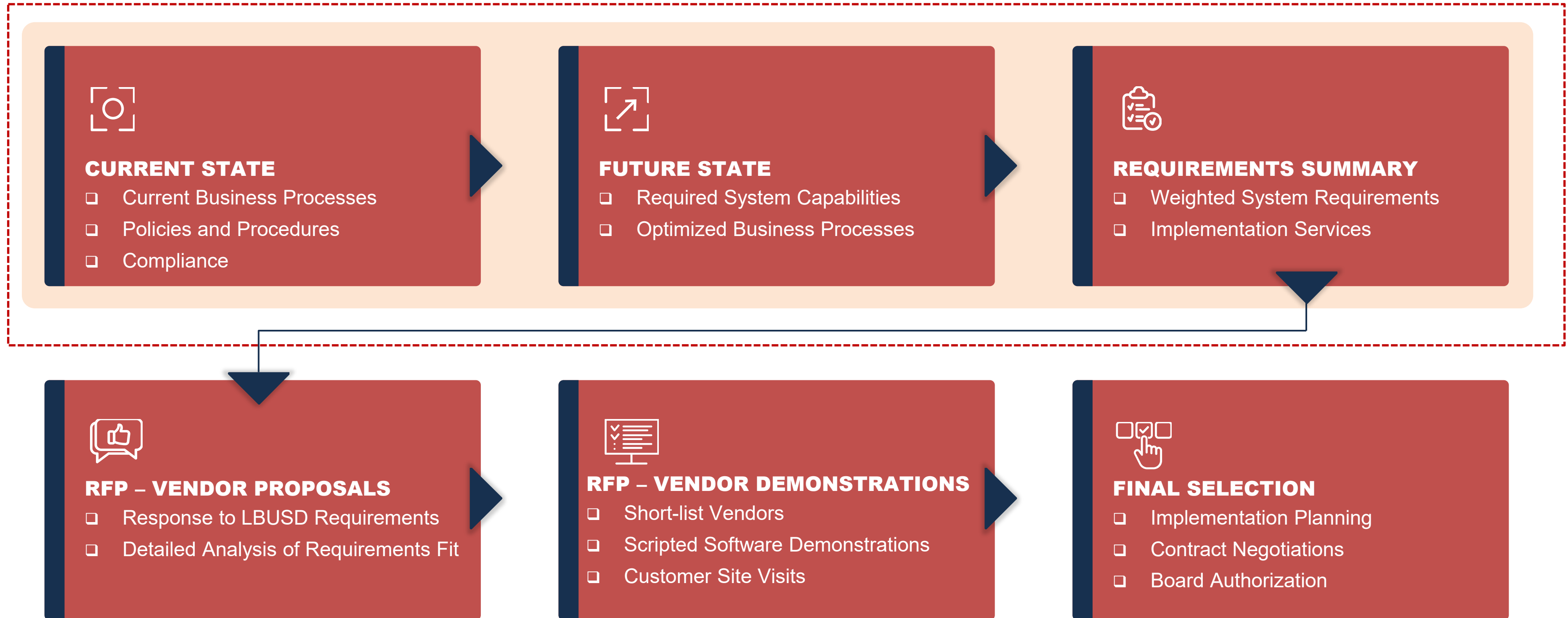
Alan Reising  
David Van Westerhuyzen

## Project Consultants

Katrina McCullough, Project & Change Lead  
Prysilla Martiz, Project & Change Coordinator

Breana Ortiz, HR Business Systems Analyst  
Rati Sah, Financial Business Systems Analyst

# Vendor Selection Process



# Request for Information

## Bidders Conference Statistics

- ❑ Held Thursday March 27, 2024
- ❑ 40+ Attendees
- ❑ Vendor Representation\*
  - CGI
  - Frontline
  - Infor
  - Oracle
  - Power School
  - SAP
  - Tyler
  - UKG (Kronos)



*\*Including Multiple System Integration Partners*

# RFI Learnings

## Best Practices for **Large-Scale ERP Implementations**



**Establish  
Guiding  
Principles**



**Establish a  
Governance/  
Steering  
Committee for  
decision making  
and escalations**



**Begin with  
Financial systems,  
followed by  
HR/Payroll**



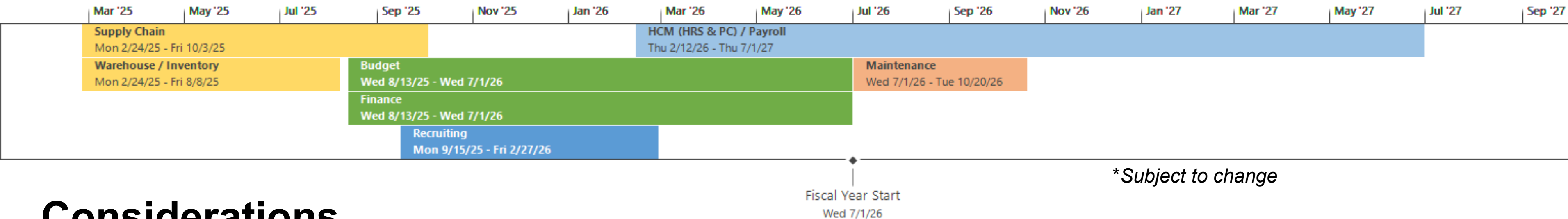
**Identify LBUSD  
dedicated project  
personnel during  
the implementation**



**Minimize  
customization;  
standardize  
business  
processes**

# Implementation Approach

## *Draft Implementation Schedule\**



## Considerations

- Approximate 32-month timeline
- Five phases
- Begin with Procurement
- Budget/Finance aligned to fiscal year
- Recruiting launch in low hiring season, concurrent with Budget/Finance
- HR and Payroll concurrent with Budget/Finance
- Payroll includes highest complexity and risk

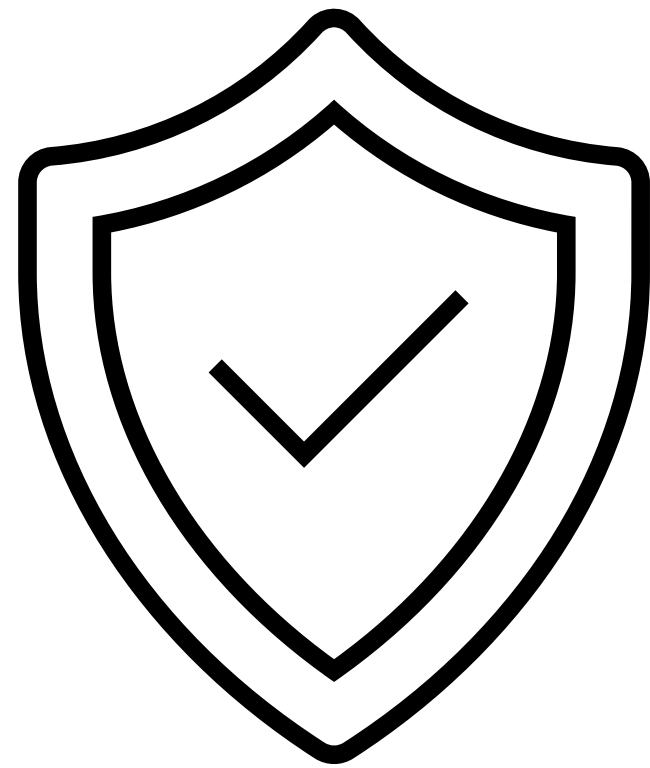
# Investment

- The Project Team developed a preliminary budget
- Validated with RFI data and benchmarked with other K12s
- Preliminary investment range is \$32-42M over four fiscal years
- Budget will be refined throughout the planning process



# Next Steps



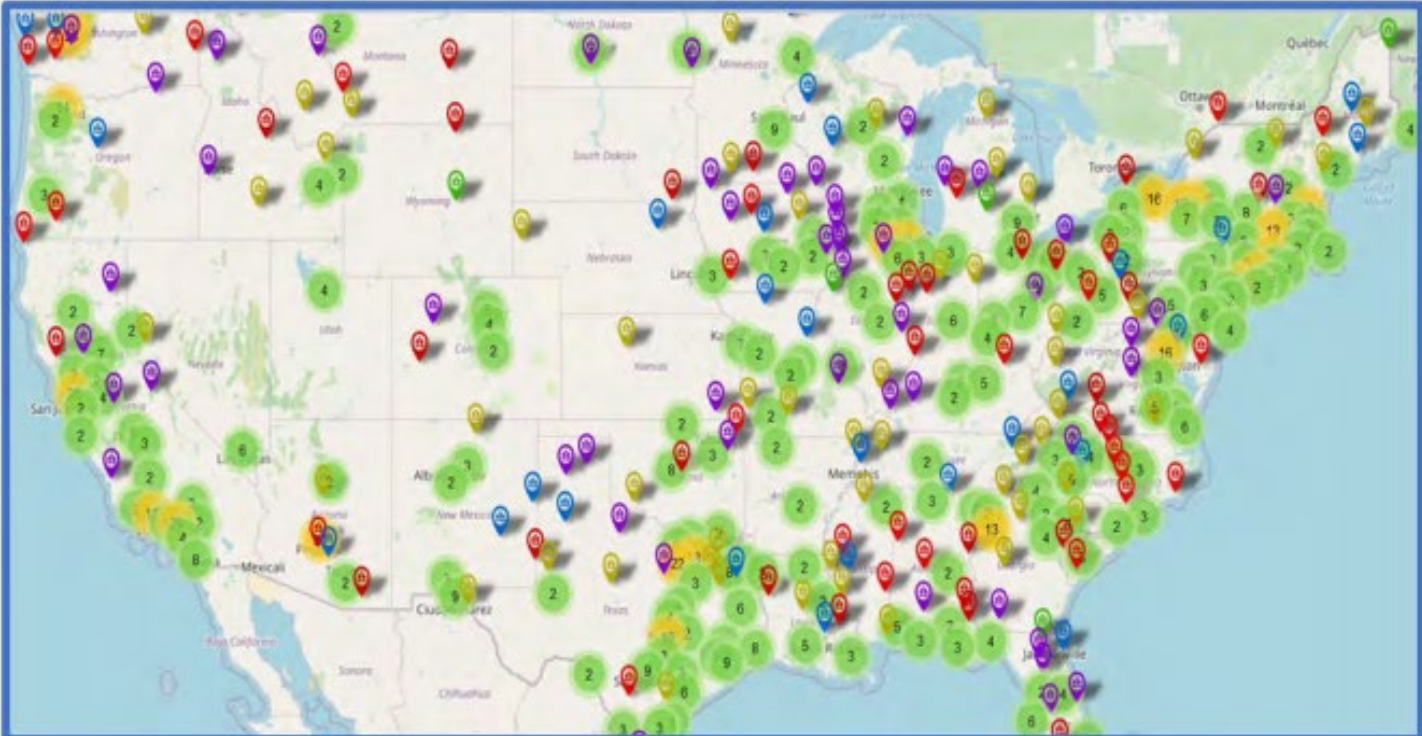


# **Cybersecurity Program Update**


# Rising Threat of Cyber Attacks in Education


The rising threat of cyber attacks, and the high costs associated in recovering effectively following an event, presents a large and expensive risk that all school districts must address to maintain learning continuity


## K-12 Cybersecurity Incidents are Expanding Across the Country





The K-12 Cyber Incident Map, a visualization of publicly disclosed school cyber incidents from 2016 to present. Available online at <https://k12six.org/map>

- 

**Data Breach/Leaks**
- 

**Phishing**
- 

**Other Incidents Resulting in School Disruptions**
- 

**Ransomware Attacks**
- 

**Denial-of-Service Attacks**

Same Criminal Syndicate: Cyber Attacks Since LA Unified

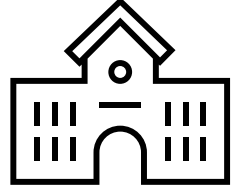
Xavier University of Louisiana	United States
University Institute of Technology of Paris	France
Publicare	Switzerland
Universidade Catolica Portuguesa	Portugal
Feu Vert	Spain
Glutz	Switzerland
Plascar Participacoes Industriais	Brazil
IKEA	Morocco
IKEA	Kuwait
Cincinnati State	United States
Institute of Science and Technology	Austria
Baysgarth School	United Kingdom
Kreisverwaltung Rhein-Pfalz-Kreis	Germany
Hartnell College	United States
CR&R Environmental Services	United States
Jammal Trust Bank	Beirut
Unidad Medica Angloamericana	Spain
Rooks Heath School	United Kingdom
YMCA of Metropolitan Washington	United States
Kujalleq Municipality	Greenland
The Bishop of Hereford's Bluecoat School	United Kingdom
Maternite des Bluets	France
Mars Area School District	United States
Test Valley School	United Kingdom
Pate's Grammar School	United Kingdom
Marist College Ashgrove	Australia
HALYVOURGIKI.S.A.	Greece
TMSShipping	United States
Grupo Jaime Camara	Brazil

\* Blue denotes education sector

## US Education Organizations Impacted by Ransomware in 2022

Obtained from: Emisoft. 2022. The State of Ransomware in the US: Report and Statistics.

- 44 colleges and universities
- 45 school districts (operating almost 2,000 schools)
- Data obtained in 65% of incidents (up from 50% the previous year)



# Cybersecurity Enhancements

## Recently Completed



- Cyber Lead
- Various Assessments
- Server Protection
- Multi-Factor Authentication
- Clever Student Portal
- Vulnerability Scanning

## Happening Now

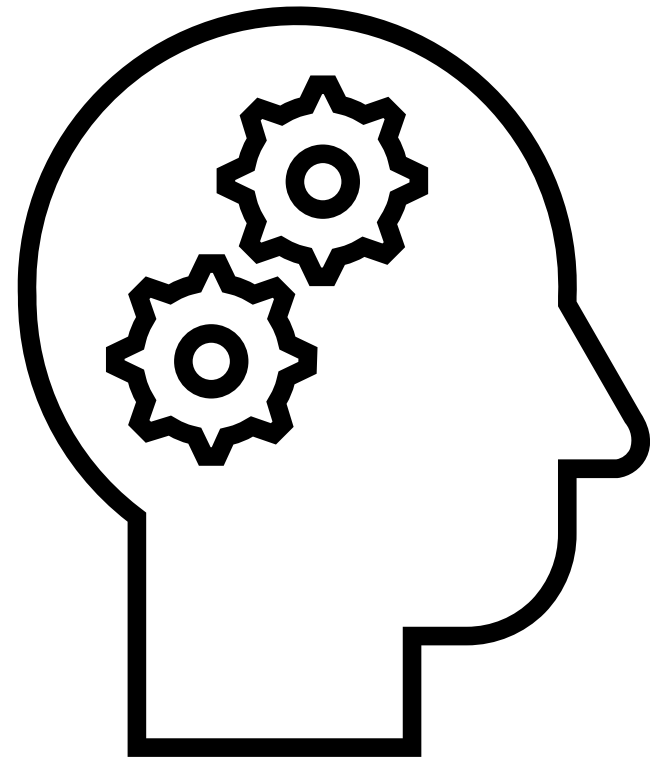


- Clever Badging for Elementary
- Firewall Enhancements
- Penetration Test
- Advanced Endpoint Protection
- Policies and Procedures
- Student Interns

## Next



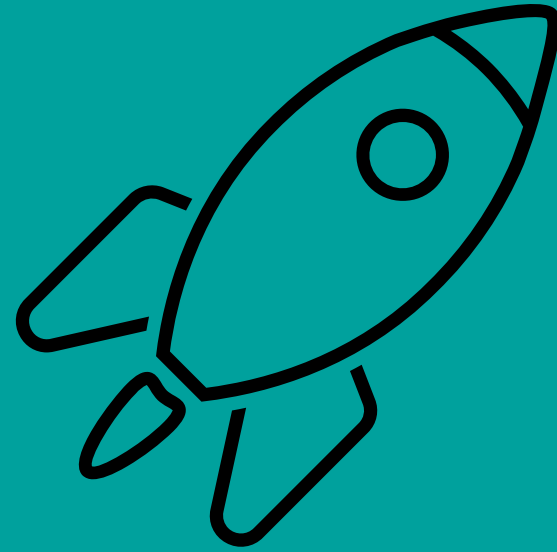
- Log Analytics
- 24x7 System Monitoring
- New Self-Service Account Management Features
- Identity and Access Management
- New Job Classifications & Training



# **Artificial Intelligence Update**

# AI Task Force Members

Name	Department/School	Role
Meagan Kinsey	Legal	Assistant General Counsel
Chris Lund	OCIPD	Assistant Superintendent
Angelica Gonzalez	OCIPD	Director
Amy Pendray	OCIPD	Program Specialist
Cecilia Santos-Camerino	OCIPD	Director
Vanitha Chandrasekhar	Instructional Technology	Program Administrator
Gregg Parra	HR	Operations Manager
Wendy Rosenquist	HR	Program Administrator
Lucy Salazar	Equity, Engagement & Partnerships	Director
Sal Madrigal	Middle Schools	Program Administrator
Beth Cohen	Prisk ES	Principal
Laura Martin	Hamilton MS	Principal
Danyett Armstrong-Lee	Lindsay Academy MS	Principal
George Walton	Cabrillo HS	Assistant Principal
Edward Sigur	Dooley ES	Principal
Stacie Alexander	Wilson HS	Assistant Principal
Thyjuan Harris	McBride HS	Assistant Principal
Tarquinn Curry	Jefferson MS	Teacher
Porsha Smith	Washington MS	Teacher, special assignment
Jack Kelanic	TISB	Chief Technology Officer
Rico Alonzo	TISB	IT Manager
Oswaldo Rios	TISB	IT Supervisor



## **AI Task Force Charge:**

**Explore responsible use of AI in the graduate, adult, and system portraits. Take action to learn from the community, establish guiding principles, develop initial policies, and provide guidance, professional development and support to instructional and business teams.**

# AI Task Force Goals

90-day Goals

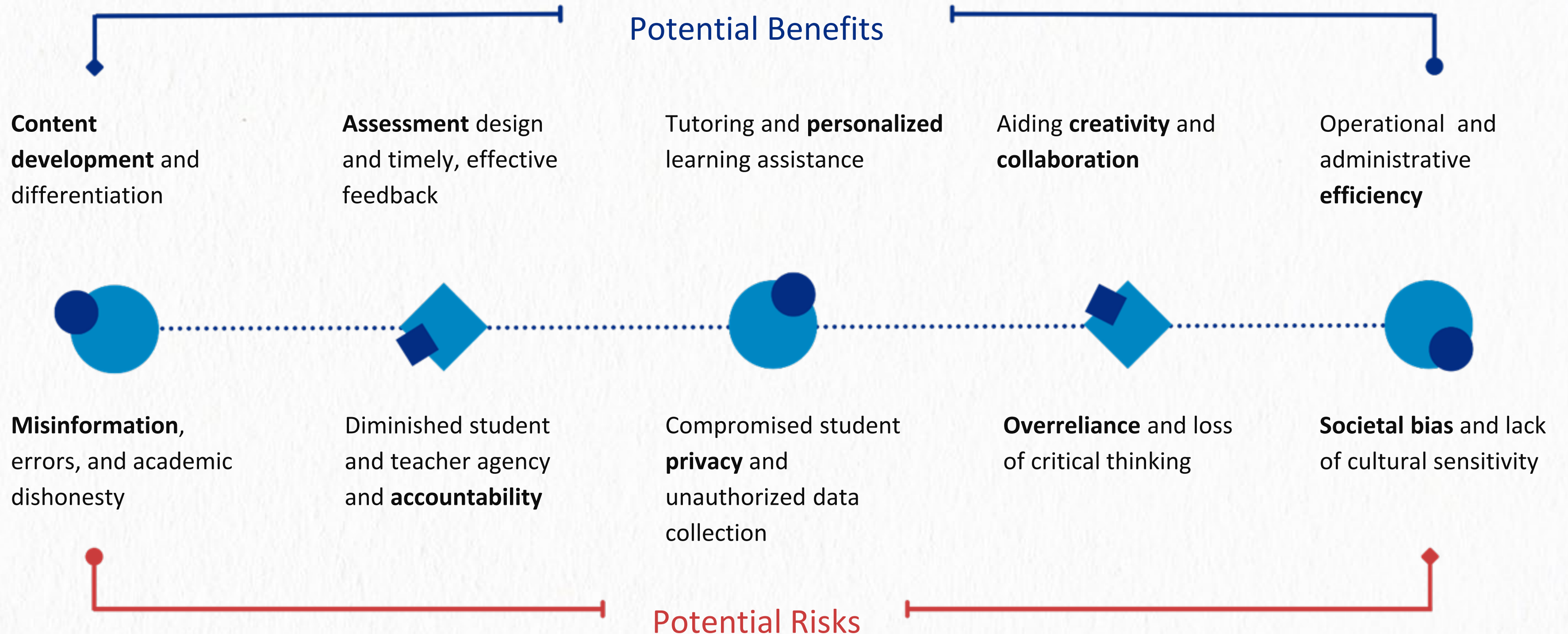
Develop AI Guiding Principles  
Best practices from other K-12s  
Recommend policy position for students over age 13  
Update student & adult Responsible Use Policies  
Map AI skills to the Graduate, Adult, System Portraits  
Conduct focus groups or surveys

Invite experts to present/educate  
Collaborate with LACOE/LBCC or other agencies  
Work sessions with Google, Microsoft, Open AI, etc.  
Identify 2-3 pilot use cases  
Develop 2024-25 PD plans  
Deep-dive learning

180-day Goals



# Potential Benefits and Risks of AI



# Approach for Implementing AI



We are here!

## Phase 1

Create policies to address immediate risks so that AI does not undermine learning during the 24-25, and to unlock immediate value for staff.



## Phase 2

Facilitate organizational learning by making a small but strategic investments in harnessing the individual learning of the many educators already using AI.

## Phase 3

Identify areas for improvements and effective transformations with potential to scale to support the education system.

**THANK YOU!**

**LONG BEACH**

UNIFIED • SCHOOL • DISTRICT

*Excellence and Equity*